



# LD316/LD320d

*Compact, convenient and always up to the task*

*Combines four essential office systems, making it easy and cost-effective for small businesses and workgroups to get more done*



*your document management partner*

# *Elevate your office to a whole new level of productivity*

If you want to get more done, you need a system that can do more for you—the Lanier LD316/LD320d. Copy, print, scan and fax all from one conveniently compact and powerful system. Plus, you do not have to spend extra time setting up, maintaining and networking four separate devices.

Create high-quality hardcopies. And save money by sharing and archiving electronic documents. You will also benefit from having remote management and security functions.

## ***Set a New, More Productive Pace***

The easiest way to boost productivity is to make common tasks simpler and more convenient. You can do it all with the Lanier LD316/LD320d. Packed with user-friendly and time-saving features, the Lanier LD316/LD320d satisfies all of your document production needs—keeping everyone's day moving.

- Speed up production by outputting 16 pages per minute with the Lanier LD316 and 21 pages per minute with the Lanier LD320d.
- Expand your copying and scanning capabilities with a large, ledger-sized platen. You will also save time and money by keeping more jobs in-house.
- Take advantage of virtually hands-free production by adding an optional 30-sheet Automatic Document Feeder (ADF) to the Lanier LD316 or Lanier LD320d. Or add an optional 50-sheet Automatic Reversing Document Feeder (ARDF) to the Lanier LD320d and process two-sided documents.
- Run job after job without interruption thanks to a generous maximum paper capacity up to 1,600 sheets.
- Save paper and filing space with the ability to copy and print two-sided documents with stackless duplexing on the Lanier LD320d.
- Simplify distribution with DeskTopBinder™ Lite. It lets you quickly view thousands of pages of stored documents—even across numerous folders—and easily combine them into a single document.





### ***Boost Your Print Production***

**Consolidate your printers with rapid speeds and controls that let you perform virtually any printing task. You will also benefit from a generous paper supply of up to 1,600 sheets that most stand-alone printers can't match.**

- Eliminate network congestion and print PDFs quickly—without opening an application—using PDF Direct Print.
- Create documents faster than ever. Lanier's standard intuitive Refined Print Command Stream (RPCS) icon-based print driver lets users apply job settings—from simple to complex—and run jobs with a single mouse click.
- Print documents created with most common business applications thanks to standard PCL5e/6 print drivers or optional genuine Adobe® PostScript® 3™.

### ***Simplify Document Management***

**While we do not live in a paperless society, you can get a head start with the Lanier LD316/LD320d. Advanced scanning offers you resolutions up to 600 dpi and the ability to conveniently convert documents to TIFF or PDF files without the need for additional desktop systems.**

- Save time, postage and overnight delivery charges by scanning hardcopy documents and sending them directly to recipients' e-mail addresses.
- Simplify file sharing and document archiving by scanning documents to network folders.
- Securely share confidential documents in the form of encrypted PDFs, rather than as hardcopies that can be lost in the mail or misplaced.

### ***Fax and Save Time and Money***

**The Lanier LD316/LD320d comes with a range of faxing options that make it easier than ever to send documents and receive faxes without leaving your desk.**

- Fax hardcopies quickly with a Super G3 modem that fires off pages in as little as three seconds per page.
- Save on long-distance and international phone charges and paper costs with Internet Fax, allowing you to send scanned documents directly to e-mail addresses or to Internet-enabled facsimile systems.



*Featuring a convenient, compact footprint, the Lanier LD316/LD320d lets you consolidate four systems into one.*



*Use in-bound fax routing to send fax documents directly to a PC and reduce paper costs.*

- Reduce work interruptions and save paper by using the LAN Fax feature to send faxes directly from your PC.
- Save on long-distance and international phone charges by using IP Fax to send documents to another IP fax machine.
- Reduce paper use by automatically forwarding inbound faxes directly to e-mail addresses or network folders. An e-mail notification alerts you when a fax has arrived.
- Save time and prevent misdials by retrieving fax numbers and e-mail addresses from your corporate address book using the LDAP server.

## Seamless Network Integration

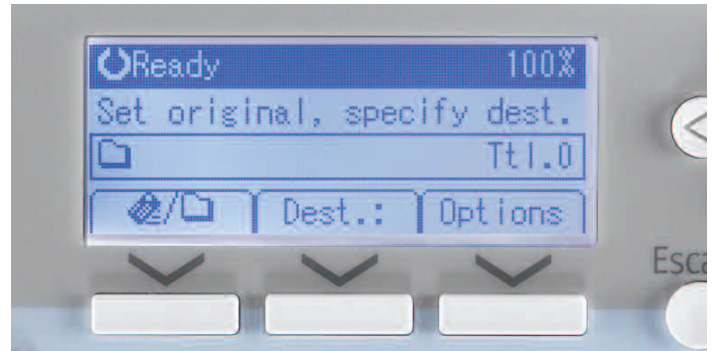
**Boost productivity and work more efficiently. The Lanier LD316/LD320d offers advanced networking capabilities so people can spend less time walking back and forth to the system—and more time getting their work done.**

- Connect the way you want using the standard 10BaseT/100BaseTX Ethernet or USB 2.0 interface.
- Work wirelessly with optional Wireless LAN and Bluetooth™ interfaces.
- Eliminate time-consuming manual meter reading and reporting with Lanier @Remote Intelligent Management System.
- Empower administrators with Web SmartDeviceMonitor™ and Web Image Monitor™. Both allow users to monitor system status, settings and more from their desktops.

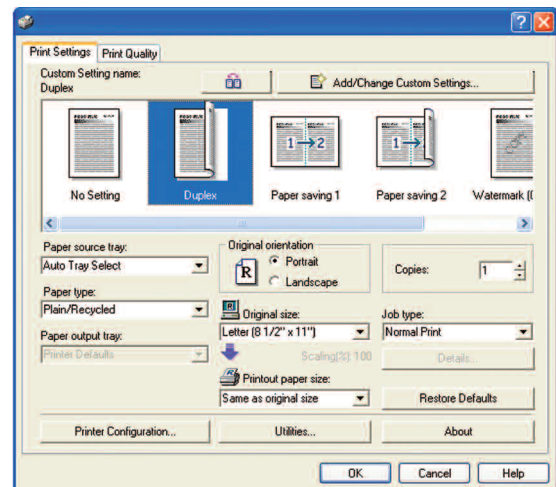
## Protect Your Sensitive Data

**Whether you work with paper or electronic documents—whether you go wireless or direct connect—you can be confident that all your data is secure.**

- Protect sensitive information and prevent unauthorized use by controlling system access with several methods of User Authentication.
- Confidently store frequently used e-mail addresses and fax numbers right on the system. Advanced address book encryption ensures they remain secure.
- Protect printed documents by using Mask Type for Copying to embed messages that appear if a document is copied.



*Instantly send any document at no cost to any network destination through the powerful Lanier Scan-to technology.*



*Lanier's Refined Print Command Stream (RPCS) is an easy-to-use, icon-based print driver that enables you to apply and save special settings.*

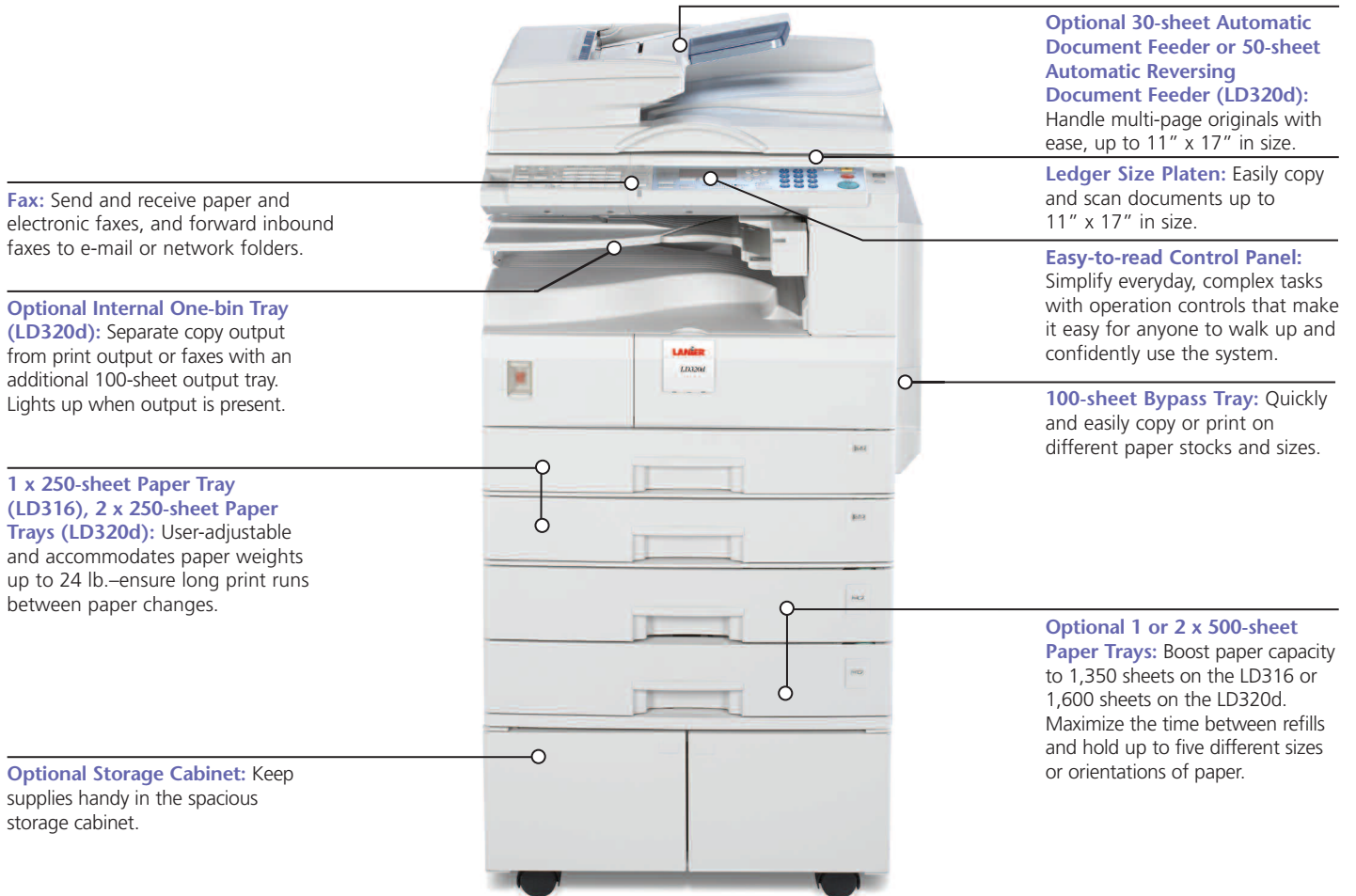
## Your Environmental Partner



**Lanier continues its long-standing commitment to developing office solutions with environmentally friendly and superior energy- and supply-saving features, without compromising productivity, including:**

- Quick Start-Up (QSU) Technology
- Power-saving Sleep Mode
- Duplex and Combine Copy Modes
- Toner Recycling
- Low Noise Levels
- Minimal Ozone Emissions
- Restriction of Hazardous Substances Compliant (RoHS)

## Lanier LD316/LD320d Digital Imaging Systems



## Multiple configurations for maximum creativity.



**LD316:** Base model with optional 30-sheet ADF, standard 250-sheet Paper Tray and standard 100-sheet Bypass Tray.



**LD316spf:** Base model with standard copy, print, scan and fax capabilities, optional 30-sheet ADF, standard 1 x 250-sheet and optional 2 x 500-sheet Paper Trays, plus optional Cabinet Stand.



**LD320d:** Base model with optional 50-sheet ARDF, standard 2 x 250-sheet Paper Trays, standard 100-sheet Bypass Tray and optional One-bin Tray.



**LD320dspf:** Base model with standard copy, print, scan and fax capabilities, optional 50-sheet ARDF, standard 2 x 250-sheet and optional 2 x 500-sheet Paper Trays, standard One-bin Tray, plus optional Cabinet Stand.

# LD316/LD320d

## SPECIFICATIONS

### ENGINE/COPIER SPECIFICATIONS

<b>Configuration</b>	Console
<b>Scanning Element</b>	Flatbed with CCD Array Image Sensor
<b>Toner</b>	Dry Process (dual component)
<b>System Memory</b>	16 MB (std./max.)
<b>Document Feeder</b>	Optional 30-sheet ADF (LD316/LD320d) Optional 50-sheet ARDF (LD320d)
<b>Copy Resolution</b>	600 x 600 dpi
<b>Grayscale</b>	256 Levels
<b>Exposure Adjustment</b>	Manual & Automatic
<b>Quantity Indicator</b>	1-99
<b>Original Type</b>	Sheet/Book
<b>Original Size</b>	Up to 11" x 17"
<b>Copy Size</b>	5.5" x 8.5" to 11" x 17"
<b>Copy Type</b>	Plain Paper, Envelopes, Postcards
<b>Warm-Up Time</b>	26 Seconds
<b>First-Copy Speed</b>	6.5 Seconds
<b>Continuous Copy Speed</b>	16 copies/minute (LD316) 21 copies/minute (LD320d)
<b>Recovery Time (from Auto Off)</b>	Less than 10 seconds
<b>Power Source</b>	120 V/60 Hz
<b>Dimensions (WxDxH)</b>	21.6" x 22.4" x 16.5" (LD316) 23.1" x 22.4" x 22" (LD320d)
<b>Weight</b>	78 lbs. (LD316) 103 lbs. (LD320d)
<b>Standard Paper Capacity</b>	250 Sheets x 1 Tray (LD316) 250 Sheets x 2 Trays (LD320d)
	100-sheet Bypass Tray
<b>Optional Paper Capacity</b>	500 Sheets x 1 Tray or 500 Sheets x 2 Trays
<b>Paper Size</b>	5.5" x 8.5" to 11" x 17"
<b>Paper Weight</b>	16 to 24 lb. Bond (Paper Trays) 14 to 43 lb. Bond/90 lb. Index (Bypass Tray) 20 to 24 lb. Bond (Duplex Unit)
<b>Output Tray Capacity</b>	250 Sheets 100-sheet One-bin Tray (Optional for LD320d)
<b>Reduction Ratios</b>	50%; 65%; 78%; 93%
<b>Enlargement Ratios</b>	121%; 129%; 155%
<b>Zoom</b>	50% to 200% in 1% increments

### COPIER FEATURES

Auto Paper Selection, Auto Reduce/Enlarge, Auto Start, Auto Tray Switching\*, Combine Copy (2 in 1, 4 in 1), Electronic Sort, Image Rotation, Photo Mode, Rotate Sorting\*, Series Copy, User Codes (50), User Tools

\*Requires optional Paper Bank on the LD316.

### PRINTER SPECIFICATIONS (optional)

<b>Print Speed</b>	16 ppm (LD316) 21 ppm (LD320d)
<b>CPU</b>	RM5231 400 MHz
<b>Memory Capacity</b>	384 MB standard
<b>Standard Interfaces</b>	Ethernet 10BaseT/100BaseTX, USB 2.0
<b>Optional Interfaces</b>	IEEE 802.11b Wireless LAN, Bluetooth™, IEEE 1284 Parallel
<b>Network Protocol</b>	TCP/IP; IPX/SPX; AppleTalk; SMB
<b>Network Operating</b>	Windows® 9x/NT4.0/2000/Me/XP/ Server 2003 Macintosh® OS 8.6 or later, Mac® OS X Classic, Mac® OS X Native: v.10.1 or later Novell® NetWare 3.12, 3.2, 4.1, 4.11, 5.0, 5.1, 6, 6.5, UNIX filters for Sun Solaris 2.6/7/8/9/10 HP-UX 10.x/11.x/11iv2, SCO OpenServer 5.0.6 /5.0.7, RedHat Linux 6.x/7.x/8.x/9.x/ Enterprise and IBM AIX V4.3 & 5L Version 5.1/5.2 /5.3, SAP R/3 3.x or later, mySAP ERP2004 or later
<b>Utilities</b>	SmartDeviceMonitor™, Web Image Monitor™, Web SmartDeviceMonitor™, DeskTopBinder™ Lite
<b>Page Description Languages</b>	Standard RPCS™, PCL5e/6 Optional Adobe® PostScript® 3™
<b>Print Resolution</b>	600 x 600 dpi
<b>Fonts for PCL5e/6</b>	35 Intellifonts, 10 TrueType Fonts, 1 Bitmap, 13 International Fonts
<b>Fonts for PS3</b>	136 Roman Fonts

### PRINTER FEATURES

Automatic Tray Select, Auto Tray Switching\*, Duplex Printing (LD320d), Envelope Printing, Watermarks

\*Requires optional Paper Bank on the LD316.

### SCANNER SPECIFICATIONS (optional)

<b>Scanning Speed</b>	Scan-to-Email/Folder/Network: 43 ipm @ 200 dpi, Letter Size
<b>Scanning Resolution</b>	600 dpi
<b>Grayscale</b>	256 Levels
<b>Scan Area</b>	Up to 11" x 17"
<b>Standard Interfaces</b>	Ethernet 10BaseT/100BaseTX
<b>Optional Interfaces</b>	IEEE 802.11b Wireless LAN
<b>Protocol</b>	TCP/IP
<b>File Formats</b>	TIFF; PDF

### SCANNER FEATURES

Black & White Scanning, Duplex Scanning (LD320d), Embedded Scan-to-Email, Image Rotation, Network TWAIN Scanning, Scan-to-Folder (SMB/NCP/FTP), ScanRouter Lite

### SECURITY FEATURES

User Authentication\*, SNMP v3, Mask Type for Copying, Encrypt Address Book\*

\*Requires Print/Scan Kit or All-in-One Kit.

### FAX SPECIFICATIONS (optional)

<b>Circuit</b>	PSTN, PBX
<b>Compatibility</b>	ITU-T G3
<b>Resolution</b>	200 x 100/200/400 dpi
<b>Compression Method</b>	MH, MR, MMR, JBIG
<b>Scanning Speed</b>	30 ppm (Standard/Detail Modes) 16 ppm (Fine Mode)
<b>Modem Speed</b>	33.6Kbps – 2,400 bps w/Auto Fallback
<b>Transmission Speed</b>	G3: 3 seconds/page (w/MMR)*, ** G3: 2 seconds/page (w/JBIG)*, ** 4 MB (320 Sheets*)
<b>Memory</b>	
<b>Memory Backup</b>	1 hour
<b>Quick Dials</b>	32
<b>Speed Dials</b>	150
<b>Group Dials</b>	10 (max.100 per group)
<b>ID Code Programming</b>	4 Digits
<b>User Function Key</b>	3 keys

\*Based on ITU-Test Chart #1 in standard mode.

\*\*Approximate speed is per page at 33.6Kbps and dependent on optimal line quality. Customer performance may vary by location.

### FAX FEATURES

A1 Short Protocol, Authorized Reception, Auto Reduction, Batch Transmission, Battery Backup, Dual Access, Duplex Fax Transmission (LD320d), Error Correction Mode, Inbound Fax Routing\*, IP Fax\*, Internet Fax (T.37)\*, LAN Fax\*, Manual Reception, Page Retransmission, Parallel Memory Transmission, Reception Time Printing, Restricted Access, Send Later, Serial Broadcasting, Substitute Reception

\*Requires optional All-in-One Kit

### ACCESSORIES

#### DF2000 Automatic Document Feeder

<b>Original Size</b>	5.5" x 8.5" to 11" x 17"
<b>Original Weight</b>	14 to 28 lb. Bond
<b>Original Capacity</b>	30 Sheets
<b>Dimensions (WxDxH)</b>	21.6" x 18.5" x 3.55"
<b>Weight</b>	15.4 lbs.

#### DF2010 Automatic Reversing Document Feeder (LD320d only)

<b>Original Size</b>	5.5" x 8.5" to 11" x 17"
<b>Original Weight</b>	Simplex Original: 10 to 34 lb. Bond; Duplex Original: 17 to 28 lb. Bond
<b>Original Capacity</b>	50 Sheets
<b>Dimensions (WxDxH)</b>	21.6" x 18.5" x 5.1"
<b>Weight</b>	22.05 lbs.

#### PS450 Paper Bank\*

<b>Paper Capacity</b>	500 Sheets x 2 Trays
<b>Paper Size</b>	5.5" x 8.5" to 11" x 17"
<b>Paper Weight</b>	16 to 28 lb. Bond
<b>Dimensions (WxDxH)</b>	21.6" x 20.5" x 10.6"
<b>Weight</b>	55.1 lbs.

\*Configuration with Small Cabinet recommended.

#### PS460 Paper Bank\*

<b>Paper Capacity</b>	500 Sheets x 1 Tray
<b>Paper Size</b>	5.5" x 8.5" to 11" x 17"
<b>Paper Weight</b>	16 to 28 lb. Bond
<b>Dimensions (WxDxH)</b>	21.6" x 20.5" x 5.3"
<b>Weight</b>	26.05 lbs.

\*Configuration with Medium Cabinet recommended.

#### Type PT340 One-Bin Tray (LD320d only)

<b>Paper Size</b>	5.5" x 8.5" to 11" x 17"
<b>Paper Weight</b>	16 to 28 lb. Bond
<b>Paper Capacity</b>	100 Sheets
<b>Dimensions (WxDxH)</b>	8.5" x 18.9" x 4.1"
<b>Tray</b>	13.2" x 15.4" x 1.7"
<b>Weight</b>	3.5 lbs.



Lanier, a world of difference

The Lanier philosophy is embodied in Customer Vision®: a commitment we make every day. It means seeing the business through your eyes, responding to your needs, and exceeding your expectations.

www.lanier.com

Lanier Worldwide, Inc. 2300 Parklake Drive NE, Atlanta, GA 30345

©2007 Lanier Worldwide, Inc. All rights reserved. Windows® and Windows® 95/98/Me/NT4.0/2000/XP are registered trademarks of Microsoft Corporation. Macintosh®, Mac® OS and AppleTalk® are registered trademarks of Apple Computer, Inc. Adobe® and PostScript® are registered trademarks of Adobe Systems, Inc. PCL™ is a registered trademark of Hewlett-Packard Company. RPCS™ is a trademark of Ricoh Company Ltd. All other trademarks are the property of their respective owners. Print speed may be affected by network, application or PC performance. Specifications and external appearances are subject to change without notice. Products are shown with optional features. Printed in U.S.A. on recycled paper.

